



A FULL RANGE
OF PROVEN FEEDERS
AND THE PEOPLE
TO SUPPORT YOU



WORLDWIDE EXPERIENCE AND EXPERTISE WITH LOCAL FLAVOR

Sandvik offers you a wide range of quality feeders. But that is not all. Many of our sales people have a long experience with many types of feeders and are well qualified to help you select the right equipment for your plant. Whether you need just a feeder or a complete process solution, Sandvik can provide you with equipment that is easy to install and fully functioning from day one.

Sandvik has actually designed, manufactured, supplied and serviced top-of-the-line feeders for mining and aggregates customers worldwide for over half a century.

Sandvik has an unrivaled network of subsidiaries and a strong local presence in all major countries.

We have a tradition and conviction that there can be no substitute for direct service and direct contact.

Our some 130 market companies assure easy access to specialists whenever required. More importantly, Sandvik service is a united global team of experts. They can assist each other when required, or put together special teams for specific cases.

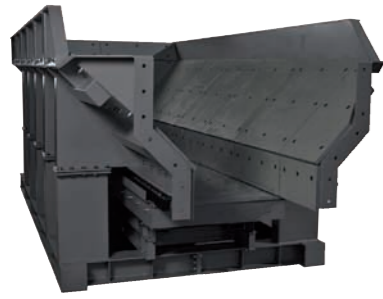
Sandvik service and stocking is

managed locally with central support. Moreover, we have one simple aim: to benefit your bottom line.

EXTENDED EQUIPMENT LIFE WITH SANDVIK WEAR PROTECTION

Sandvik offers a versatile range of rubber, ceramic and cast in carbide wear protection products for feeders applications. Extended equipment life, safe handling, minimized noise levels, reduced maintenance & operating costs, and easy handling are only a few of the many assets of the top-quality product offering.





SH primary reciprocating plate feeder unit



SH primary reciprocating plate feeder



SH secondary reciprocating plate feeder



SP Feeder Unit



SP with u-lip

RECIPROCATING PLATE FEEDERS

Sandvik SH Reciprocating Plate Feeders are especially designed for extra heavy and medium duty feeding in mining and construction applications.

This robust feeder is ideal for primary crushing and also for feeding material onto the belt conveyors from stockpiles or silos.

PRODUCT FEATURES

- Rugged structure gives maximum lifetime and the operation principle allows dumping of big lumps directly onto the feeder pan.
- Vibration free operation and small dynamic loads.
- Powerful hydraulic drive gives minimum operating costs and enables easy capacity adjustment from zero to 100% as well as immediate stop of material feed after stopping signal.
- Can handle heavy and moist material and unlimited feed material height allows the installation directly under high ore bins or stockpiles.
- Wide range of options available for different applications.

SH AND SH UNIT FOR PRIMARY FEEDING

Model	SH					SH Unit		
	Height (mm)	Weight (kg)	Motors (kW)	Max feed (mm)*	Capacity range (m ³ /h)**	Height (mm)	Weight (kg)	Hopper volume (m ³)
SH1041	870	3 850	11	700	0-300	3 080	12 500	15
SH1351	945	5 250	30	1 000	0-450	3 660	23 000	30
SH1661	1 110	10 000	45	1 300	0-600	4 400	40 500	45
SH2571	1 450	21 000	2 × 55	2 400	0-1 250	5 300	68 000	80
SH1661M	1 115	11 400	55	1 300	0-700	4 400	42 000	45
SH2071M	1 320	18 100	2 × 55	1 800	0-1 000	6 400	60 000	100
SH2381M	1 400	23 900	3 × 55	2 000	0-1 100	3 600	75 500	50
SH2571M	1 400	22 700	3 × 75	2 400	0-1 250	5 300	72 000	80

SH FOR SECONDARY FEEDING

Model	Overall width (mm)	Overall height (mm)	Motors (kW)	Weight (kg)	Hopper volume (m ³)	Max feed (mm)*	Capacity range (m ³ /h)
SH0835	1 280	1 545	7,5	3 200	1,5	250	0-150
SH1035	1 480	1 545	11	3 500	1,5	300	0-200
SH1335	1 780	1 545	15	3 700	2,5	400	0-250
SH1645	2 250	2 015	30	8 700	4	500	0-500
SH1645M	2 250	2 685	37	12 500	7	700	0-550
SH1955M	2 550	2 700	45	15 000	12	900	0-700
SH2255M	2 850	2 615	2 × 37	16 500	15	1 200	0-950

M = Mining Duty

* Only one dimension allowed to reach up the specific value. Given value is for Sandvik Standard Hopper (inclined side walls for primary feeders).

** Maximum achievable capacity depends on the actual material bed depth height on the feeder pan and design of the hopper. Values are valid for Sandvik Standard Hoppers (inclined side walls)

PAN FEEDERS

Sandvik SP Pan Feeders are designed for high capacity feeding especially for secondary and tertiary duties.

This simple but solid feeder is ideal for feeding material from stockpiles or silos.

PRODUCT FEATURES

- Robust, all welded feeder body with high sidewalls and dust encapsulation preparation fastening parts.
- Driven by two reliable, powerful unbalanced electrical motors installed underneath the body.
- Both base mounted and suspended installations available with adjustable inclination.
- Fully engineered optional feed chutes guarantee proper installation, reliable operation and right flow geometry for high capacities.
- Wide range of sizes and options available for both construction and mining duties.

SP

Model	Pan width inside nominal, (mm)	Pan length nominal, (mm)	Max Capacity (MTPH)*	Max Feed Size (mm)**	Wear plates Bottom/ side (mm)	Power (kW) input at 50 Hz	Weight (kg)
SP0715	650	1 500	180	220	6/6	2 × 1,2	540
SP0725	650	2 500	160	220	6/6	2 × 1,2	760
SP0818	800	1 750	250	265	6/6	2 × 1,2	620
SP0825	800	2 500	250	265	6/6	2 × 1,25	790
SP1020	1000	2 000	420	330	10/6	2 × 1,25	885
SP1025	1000	2 500	375	330	10/6	2 × 2,0	1 120
SP1030	1000	3 000	400	330	10/6	2 × 2,6	1 500
SP1320	1250	2 000	550	415	10/6	2 × 1,25	1 000
SP1325	1250	2 500	500	415	10/10	2 × 2,6	1 550
SP1423	1400	2 250	600	460	15/10	2 × 2,6	2 070
SP1623	1600	2 250	820	500	15/10	2 × 5,5	2 400
SP1630	1600	3 000	1 250	500	15/10	2 × 5,5	3 000
SP2030	2 000	3 000	1 600	600	15/10	2 × 11,5	4 900
SP0818M	800	1 750	290	265	15/6	2 × 1,2	760
SP0825M	800	2 500	300	265	15/6	2 × 1,25	920
SP1020M	1 020	2 000	480	330	20/6	2 × 2,0	1 015
SP1025M	1 020	2 500	430	330	20/6	2 × 2,6	1 570
SP1030M	1 020	3 000	480	330	20/6	2 × 3,0	1 730
SP1320M	1 250	2 000	630	415	20/6	2 × 2,6	1 525
SP1325M	1 250	2 500	550	415	20/10	2 × 3,0	1 980
SP1423M	1 400	2 260	750	460	20/10	2 × 3,0	2 150
SP1623M	1 600	2 250	950	500	20/10	2 × 5,5	2 510
SP1630M	1 600	3 000	1 500	500	20/10	2 × 8,5	3 710
SP2030M	2 000	3 000	1 800	600	20/10	2 × 11,5	5 500
SP2430M	2 400	3 000	2 200	600	20/10	2 × 13,0	6 560

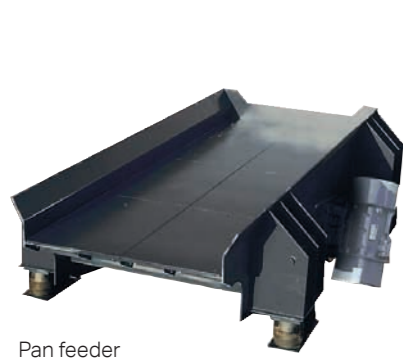
SP U-lip

Model	Pan width (mm)	U-Shape Dimension (mm)	Pan length (mm)	Max Capacity (MTPH)*	Max Feed Size (mm)**	Wear plates Bottom/ side (mm)	Power (kW) input at 50 Hz	Weight (kg)
SP1023	1 000	300/600	2 000	420	330	10/6	2 × 1,25	990
SP1028	1 000	300/600	2 500	375	330	10/6	2 × 2,6	1 440
SP1323	1 250	300/850	2 000	550	415	10/6	2 × 2,0	1 210
SP1328	1 250	300/850	2 500	500	415	10/10	2 × 2,6	1 700
SP1426	1 400	300/1 000	2 250	600	460	15/10	2 × 3,0	2 220
SP1630	1 600	500/1 000	2 500	1 250	500	15/10	2 × 5,5	2 990
SP1023M	1 020	300/600	2 000	480	380	20/6	2 × 2,6	1 250
SP1028M	1 020	300/600	2 500	430	330	20/6	2 × 2,6	1 650
SP1323M	1 250	300/850	2 000	630	415	20/6	2 × 2,6	1 730
SP1328M	1 250	300/850	2 500	530	415	20/10	2 × 3,0	2 050
SP1426M	1 400	300/1 000	2 260	750	460	20/10	2 × 5,5	2 490
SP1630M	1 600	500/1 000	2 500	1 500	500	20/10	2 × 8,5	3 700
SP2035M	2 000	500/1 350	3 000	1 800	600	20/10	2 × 11,5	5 500

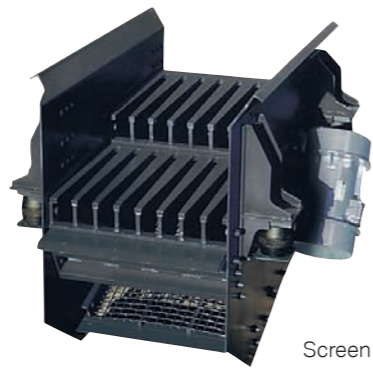
M = Heavy Duty, for high head loads. suitable for mining applications.

* Maximum Capacity figures refer to both base mounted and suspended version (installed with Sandvik feed chute or equivalent), applies for bulk density 1,6 t/m³, fraction 20-60 mm and installation angel 8°. minimum capacity is approximately 30% of maximum capacity for all SP feeders.

** Maximum feed size refers to bulk density 1,6 t/m³.



Pan feeder



Screen



SV



SW

FEEDER SCREENS

Sandvik ST Unit is a combination of a pan feeder and a double deck vibrating grizzly screen with stepped grizzly on top deck and a wire mesh underneath. Unit is especially designed for optimal fines removal in conjunction with a high degree of flow control.

ST Units are most commonly installed before a jaw or impact crusher on mobiles or at stationary crushing stations.

PRODUCT FEATURES

- Separate feeder provides accurate material flow control.
- Separate vibrating screen ensures efficient scalping, fines removal and high availability even with difficult materials.
- Low dynamic loads and power consumption due to efficient unbalanced vibration motors used.

ST

Model	Feeder Screen	Screen deck width (mm)	Total length (mm)	Grizzly length (mm) / Second deck (m ²)	Weights (kg)	Motors (kW)	Max hopper volume (m ³)	Max feed size (mm)	Capacity (t/h)*
ST0863	ST0841	750	5 580	2 × 1 000	2350	4 × 5.5	15	500	75 – 240
	ST0822			0.5 m ²	2550				
ST1063	ST1041	1 020	5 590	2 × 1 000	2530	4 × 5.5	20	600	90 – 300
	ST1022			0.6 m ²	2800				
ST1263	ST1241	1 150	5 810	2 × 1 000	2680	4 × 8.0	30	750	120 – 400
	ST1222			0.9 m ²	3620				
ST1363	ST1341	1 300	5 810	2 × 1 000	2860	4 × 8.0	30	850	165 – 550
	ST1322			1.0 m ²	3930				
ST1673*	ST1541H	1 600	6 980	2 × 600 + 1 × 1 200	5500	4 × 11.5	80	950	240 – 800
	ST1622H			2.9 m ²	6580				

* Figures correspond to material with bulk density 1.6 t/m³.

GRIZZLY FEEDERS

Wide Sandvik grizzly feeder range includes different type of feeders to be used in small mobile crushing units to extra heavy mining applications.

PRODUCT FEATURES

- Robust design enables to accept the material impacts from dump trucks or wheel loaders.
- SW models with unbalanced vibration motors provides a flexible and reliable operation with high availability.
- SV models with a dual shaft mechanism with synchronizing gears gives high capacity feeding and scalping from medium to extra heavy duty applications.
- Wide range of adjustment possibilities and options available for SV models.
- Feeder models with natural fines removal decks available as well as plain pan feeders without the grizzlies.

SV-E

Model	Inside Pan width (mm)	Inside Pan length (mm)	Grizzly length (mm)	Second deck (m ²)	Inclination (°)	Total Weight (kg)	Motor effect (kW)	Max Feed size (mm)	Max Feed Capacity* (t/h)
SV1152E	1 084	4 872	2 × 1 200	0.7	6°	6 300	1 × 22	700	560 – 850
SV1153E	1 084	4 872	2 × 1 200	0.7	6°	6 300	1 × 22	700	560 – 850
SV1252E	1 204	4 872	2 × 1 200	2.2	6°	6 550	1 × 22	900	720 – 1 080
SV1253E	1 204	4 872	2 × 1 200	2.2	6°	6 550	1 × 22	900	720 – 1 080
SV1652E	1 584	5 272	2 × 1 200	2.2	6°	9 100	1 × 37	1 200	880 – 1 320
SV1653E	1 584	5 272	2 × 1 200	2.2	6°	9 100	1 × 37	1 200	880 – 1 320
SV1852E	1 800	5 272	2 × 1 200	2.2	6°	9 600	1 × 37	1 500	1 040 – 1 560
SV1853E	1 800	5 272	2 × 1 200	2.2	6°	9 600	1 × 37	1 500	1 040 – 1 560

SV

Model	Pan width (mm)	Feeder length (mm)	Grizzly length (mm)	Grizzly area (m ²)	Total weight (kg)	Motor effect (kW)	Max Feed capacity* (t/h)
SV1032	1 020	3 000	1 × 900	0.9	3 650	15	560 – 840
SV1232	1 220	3 000	1 × 900	1.1	3 950	15	720 – 1 080
SV1532	1 520	3 000	1 × 900	1.4	4 450	15	880 – 1 320
SV1832	1 820	3 000	1 × 900	1.6	5 700	22	1 040 – 1 560
SV2132	2 120	3 000	1 × 900	1.9	6 100	22	1 200 – 1 800
SV2432	2 420	3 000	1 × 900	2.2	6 700	22	1 360 – 2 040
SV1052	1 020	4 500	1 × 1 200	1.2	4 650	15	560 – 840
SV1252	1 220	4 500	1 × 1 200	1.5	5 900	22	720 – 1 080
SV1552	1 520	4 500	1 × 1 200	1.8	6 300	22	880 – 1 320
SV1852	1 820	4 500	1 × 1 200	2.1	6 700	22	1 040 – 1 560
SV2152	2 120	4 500	1 × 1 200	2.5	8 500	37	1 200 – 1 800
SV2452	2 420	4 500	1 × 1 200	2.9	9 050	37	1 360 – 2 040
SV1062	1 020	6 000	2 × 900	1.8	6 450	22	560 – 840
SV1262	1 220	6 000	2 × 900	2.2	7 250	22	720 – 1 080
SV1562	1 520	6 000	2 × 900	2.7	8 050	30	880 – 1 320
SV1862	1 820	6 000	2 × 900	3.3	9 800	37	1 040 – 1 560
SV2162	2 120	6 000	2 × 900	3.8	10 700	37	1 200 – 1 800
SV2462	2 420	6 000	2 × 900	4.3	17 700	2 × 30	1 360 – 2 040

SW

Model	Inside pan width (mm)	Inside pan length (mm)	Grizzly length (mm) / Second deck (m ²)	Weight (kg)	Motor effect (kW)	Max hopper volume (m ³)	Max feed size (mm)	Max Feed capacity* (t/h)
SW0732/3	655	3 375	2 × 750 / 0.7 m ²	2 800	2 × 3.0	15	400	200
SW0842/3	810	4 220	2 × 900 / 1.2 m ²	3 300	2 × 5.5	15	500	250
SW1042/3	980	4 200	2 × 900 / 1.2 m ²	4 800	2 × 8.0	20	600	350
SW1052/3H	1 000	4 750	2 × 600 / 0.9 m ²	4 500	2 × 8.5	30	600	400
SW1252/3H	1 200	4 850	2 × 600 / 0.9 m ²	5 000	2 × 9.8	6 (mobile)	700	450

* At specified inclination and 1.6 t/m³. Capacities depend not only on feeder size but also on feeder inclination, feed gradation, etc.

